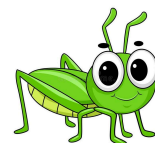




A *love* for God.  
A desire to *learn*.  
A commitment to *serve*.

# Grasshopper Schedule



8:00 - 8:45 a.m.	Arrival/Table Activities/Bathroom
8:45 - 9:00 a.m.	Morning Circle/Bible
9:00 - 9:20 a.m.	Snack/ Clean Up
9:20 - 9:35 a.m.	Bathroom
9:35 - 9:55 a.m.	Music
9:55 - 10:35 a.m.	Outside Play Time
10:35 - 10:40 a.m.	Bathroom/Wash Hands
10:40 - 10:55 a.m.	Theme Circle/Exercise
10:55 - 11:30 a.m.	Art/Project/ Chapel (Wednesdays)
11:30 - 12:00 noon	Lunch
12:00 - 12:35 p.m.	Bathroom/Wash Hands
12:35 - 2:45 p.m.	Rest Time
2:45 - 3:00 p.m.	Children begin to wake up
3:00- 3:15 p.m.	Clean-up / Bathroom
3:15 - 3:40 p.m.	Snack Time
3:40 - 3:55 p.m.	Afternoon Circle
3:55 - 4:30 p.m.	Table Time Activities
4:30 - 5:00 p.m.	Outside Time/ Pick-up

**Music Class:** Mondays, Tuesdays, and Thursdays

**Chapel:** Wednesdays